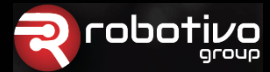


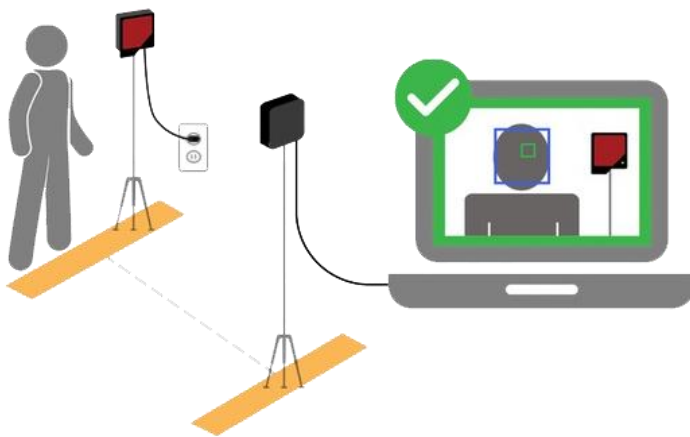
Professional Temperature Screening for Safer Communities

Helps businesses, institutions and venues reopen a safer environment by detecting people with elevated body temperature at the entrance gates to prevent spread of the virus

- Accuracy $\pm 0,3^{\circ}\text{C}$, 1s scanning time
- Accurate, fast, automated and affordable
- Automatically adapts to changes of environmental conditions like weather and ambient temperature
- Specifically designed and calibrated for skin temperature measurement with safe social distance
- Quick and easy to set up. Ready to use within minutes
- Increased safety of employees, visitors and administration of the buildings
- Ideal for receptions, lobbies, corridors, gates and other entry points to the buildings



www.firemax.pl



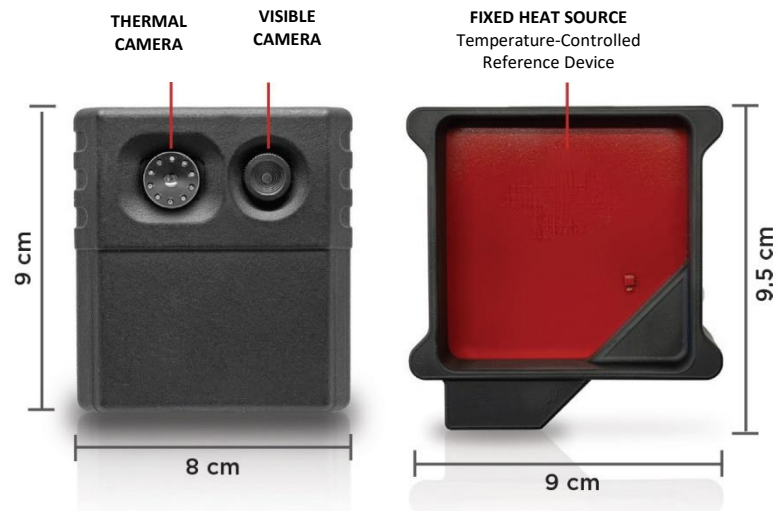
Seek Scan™ is a simple, low-cost, thermal imaging system designed to automate body temperature screening using skin temperature as a proxy. With $\pm 0.3^{\circ}\text{C}$ ($\pm 0.5^{\circ}\text{F}$) accuracy and the inclusion of a reference heat source, Seek Scan delivers high performance with a safe social distance.

The Seek Scan process provides an additional layer of preventive screening and delivers more peace of mind to businesses, institutions and participants.

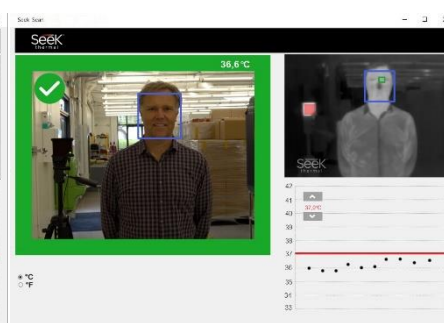
Quick to set up and easy to use.

PERFECT FOR:

- Small, medium & large businesses
- Factories and warehouses
- Hotels & Restaurants
- Healthcare Facilities
- Venues, theaters and arenas
- Nursing homes
- Schools and daycares
- Gyms and other sports facilities



FACE DETECTED
MEASURING SKIN TEMPERATURE



ESTIMATED BODY TEMPERATURE IS
BELOW THE ALARM TEMPERATURE



ESTIMATED BODY TEMPERATURE IS
ABOVE THE ALARM TEMPERATURE

KEY FEATURES

Designed and calibrated for skin temperature measurement with safe social distance

Seek Scan has been designed for professional, fast, automated and reliable temperature screening. Equipped with Black Body to provide maximum accuracy.

Safety

Increased safety of employees, visitors and administration of the buildings. Helps to maintain safe social distancing.

Affordable price

The price of Seek Scan set is significantly lower than other temperature screening systems.

Fast, Automated Screening

In seconds, the system automatically detects a face, finds the most reliable spot to measure and displays and sounds a pass/fail alert.

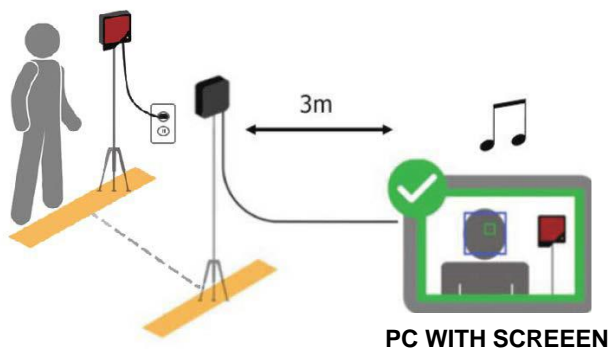
API Integration

Send alarm events, trigger access control and video management systems, pull and present historical data to integrate and stream multiple Seek Scans into one enterprise solution.

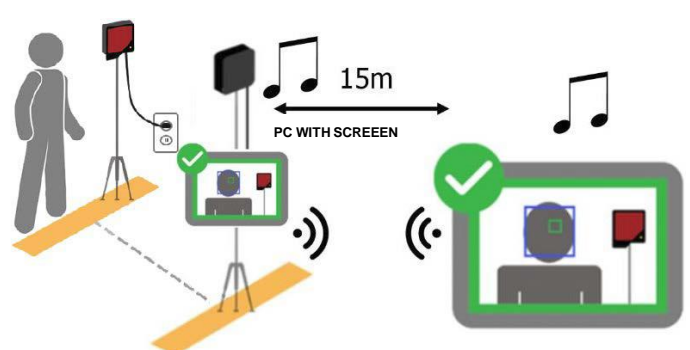
Quick and easy to set up and use

Start screening in minutes

SET COMPONENTS:	Scan POWER	Scan DUO
	ZESTAW PRZEWODOWY	ZESTAW BEZPRZEWODOWY Z DODATKOWYM MONITOREM
THERMAL & VISIBLE CAMERA MODULE	✓	✓
BLACK BODY	✓	✓
DEDICATED SOFTWARE	✓	✓
PRE-CONFIGURED PC PRO COMPUTER WITH 15" SCREEN	✓	✓
ADDITIONAL REMOTE MONITOR WITH SCREEN	-	✓
SOUND ALERT (CAMERA / REMOTE MONITOR)	✓ / -	✓ / ✓
FULL ACCESSORIES SET	✓	✓
DEDICATED STANDS	✓	✓
TECHNICAL SUPPORT	✓	✓
CE CERTIFICATE	✓	✓



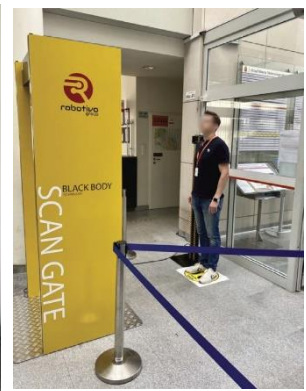
SCAN POWER



SCAN DUO

TECHNICAL SUMMARY

Camera Specifications		Description
Thermal Sensor Resolution		206 (h) x 156 (v)
Visible Light Camera Resolution		640 x 480
Horizontal / Vertical Field of View		35° (h) / 26° (v)
Lens Focal Length / F-Number		4.0mm / f/1.20
Frame Rate		<9Hz
Power		USB 5V (Plugs into Computer USB-A port)
Dimensions (L x W x H) & Weight		3 x 8 x 9 cm / 140 g
Tripod Mount		1/4"-20 Standard Camera Tripod Mount
Fixed Heat Source Specifications		
Temperature-Controlled Device		Emits a constant reference temperature
Power		110V to 220V 50/60Hz (Plugs into Wall Outlet)
Dimensions (L x W x H) & Weight		3 x 9 x 9.5 cm / 80 g
Tripod Mount		1/4"-20 Standard Camera Tripod Mount
Measurement Specifications		
Temperature Accuracy		± 0.3°C (0.5°F) typical between 36°C to 40°C (96°F to 104°F) @ 1.5 meters (5 feet) Verified in a laboratory setting using a fixed heat source
Sensor Sensitivity		40 mK typical, <50 mK max @ 25°C (Post Signal Processing)
System Specifications		
Scan Measurement Time		1 to 3 seconds typical
Operating Temperature		Optimal temperature accuracy in conditions below 105°F (40°C) ambient
API Capabilities		RTSP streaming video and UDP & TCP commands via JSON
PC/Tablet Requirements		
OS Requirements ¹		Windows 10 64-bit OS Home/Pro
Processor Requirements ²		1.2 GHz processor
RAM Requirements		4 GB
Hard Drive Requirements		+10 GB



Proven Track Record

The company was founded in 2012 by two industry pioneering scientists, Bill Parrish, PhD and Tim Fitzgibbons PhD, who spent 40 years advancing the state of military and professional-grade thermal imaging technology. Following their previous two companies, Amber Engineering and Indigo Systems, each with successful acquisitions, Seek Thermal is their third venture with the mission to make thermal imaging a part of everyday life.

Built for Quality and Scale

Seek Thermal is partnered with Raytheon and NXP to design and deliver high-quality, affordable thermal imaging sensors and products across the globe at scale. As one of the few companies in the world capable of building sensors, Seek Thermal has shipped hundreds of thousands of thermal imaging products around the world as it continues to make thermal imaging an accessible, everyday tool, so people can do their jobs safer, faster and smarter.

** Seek Scan should not be used to diagnose or exclude diagnosis of COVID-19 or any other disease or condition. Specifications and undocumented specifications are subject to change without notice or liability.*